



LAMP WITH VARIABLE  
SHUNT.



NEON LAMP.



FIXED CAPACITOR  
(SMALL VALUE).



FIXED CAPACITOR  
(LARGE VALUE).



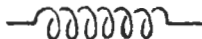
VARIABLE CAPACITOR.



GANGED CAPACITORS.



DIFFERENTIAL  
CAPACITOR.



FIXED INDUCTANCE.



VARIABLE INDUCTANCE.

# SYMBOLS.

ABS



AMMETER.



SHUNTED AMMETER.



AMMETER WITH TOROIDAL  
TRANSFORMER.



GALVANOMETER.



VOLTMETER.



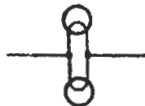
FREQUENCY METER.



MILLIAMMETER.



LAMP.



LAMPS IN PARALLEL.

AB6.

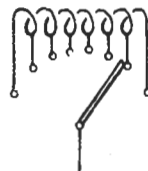
# SYMBOLS.



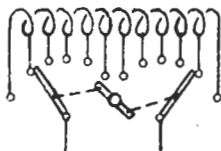
TAPPED INDUCTANCE.



INDUCTANCE WITH CORE.



INDUCTANCE WITH RANGE SWITCH.



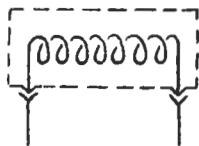
INDUCTANCE WITH SYMMETRICAL RANGE SWITCH.



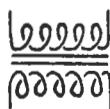
INDUCTANCES IN PARALLEL.



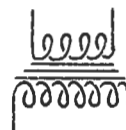
VARIOMETER.



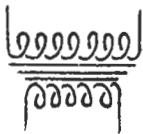
PLUG - IN COIL.



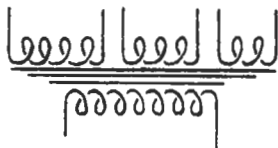
| - | RATIO TRANSFORMER.



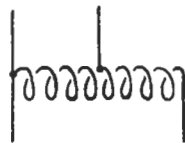
STEP - DOWN TRANSFORMER.



STEP - UP TRANSFORMER.



MULTIPLE SECONDARY  
TRANSFORMER.



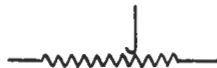
AUTO - TRANSFORMER.



FIXED INDUCTIVE RESISTANCE.



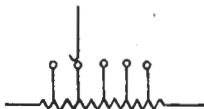
FIXED NON - INDUCTIVE  
RESISTANCE.



VARIABLE INDUCTIVE  
RESISTANCE OR RHEOSTAT.



VARIABLE NON - INDUCTIVE  
RESISTANCE.



TAPPED INDUCTIVE RESISTANCE.



LINK (CLOSED).



LINK (OPEN).



FUSE.



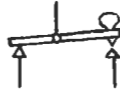
HORN BREAK WITH FUSE.

# SYMBOLS.

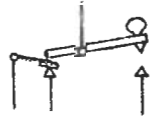
AB



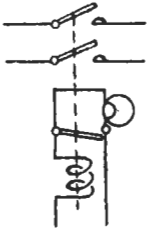
SIGNALLING KEY (WITH TWO CONTACTS).



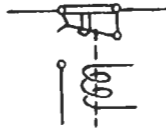
SIGNALLING KEY (WITH FRONT AND BACK CONTACTS).



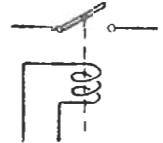
HAND OPERATED AND SIGNALLING KEY.



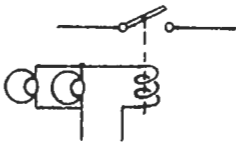
DOUBLE POLE MAGNETIC SWITCH WITH ECONOMY LAMP.



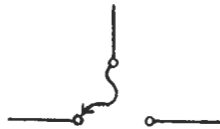
EMERGENCY LINK.



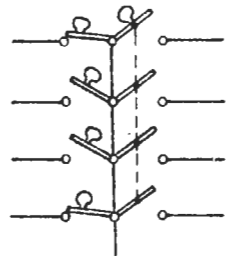
SINGLE POLE MAGNETIC SWITCH.



SINGLE POLE MAGNETIC SWITCH WITH LAMP RESISTANCE.



FLEXIBLE CHANGE-OVER CONNECTION.



MULTIPLE ~~CHANGE-OVER~~ SWITCHES (SEPARATE TO LEFT, GANGED TO RIGHT).



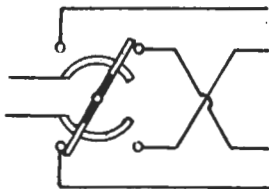
DOUBLE POLE CHANGE - OVER  
SWITCH (TO CIRCUITS IN  
OPPOSITE DIRECTIONS).



DOUBLE POLE SWITCH.



DOUBLE - POLE CHANGE - OVER  
SWITCH (TO CIRCUITS IN  
SAME DIRECTION).



RING MAIN CHANGE OVER  
SWITCH.



GATE SWITCH (BREAKS ON  
OPENING GATE).



GATE SWITCH (MAKES ON  
OPENING GATE).



EARTH CONNECTION.



QUARTZ.



LIGHTNING  
ARRESTER.



GAS GAP LIGHTNING  
ARRESTER.

8.

# SYMBOLS.



LOOP AERIAL  
(RECTANGULAR).



LOOP AERIAL  
(TRIANGULAR).



FRAME AERIAL.



AERIAL.



ROTATING SPARK GAP.



SPARK GAP.



QUENCHED SPARK GAP.



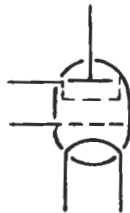
SINGLE WAVE RECTIFIER VALVE.



DOUBLE WAVE RECTIFIER VALVE.



3 ELECTRODE VALVE.



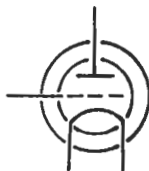
4 ELECTRODE VALVE  
(SCREENED GRID).



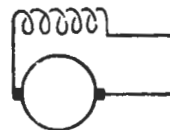
5 ELECTRODE VALVE  
(PENTODE).



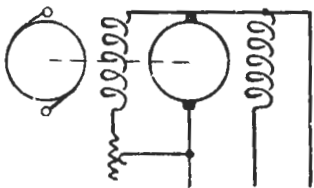
3 ELECTRODE INDIRECTLY  
HEATED VALVE.



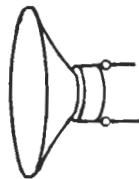
WATER-COOLED "T" VALVE.



D.C. MOTOR. (SERIES)



MOTOR ALTERNATOR.  
WITH ALTERNATOR  
FIELD REGULATOR.



LOUD SPEAKER.

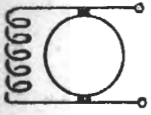


MICROPHONE.

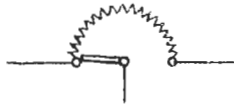


# SYMBOLS.

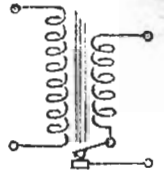
AB9  
31/1/33.



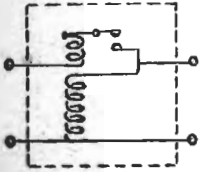
D.C. MOTOR (SHUNT)



MOTOR STARTER  
(HAND)



INDUCTION COIL.



REVERSE CURRENT SWITCH.



METAL RECTIFIER.



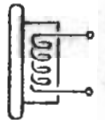
TELEPHONES



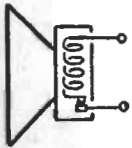
THERMO-GALVANOMETER.



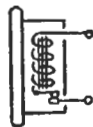
BELL.



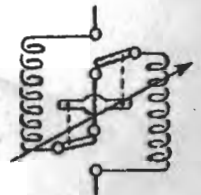
BUZZER REPEATER.



LOUD SOUNDING BUZZER



BUZZER



VARIOMETER  
(COILS IN SERIES  
OR PARALLEL).

JOL

AERIAL PLUG FITTINGS.