

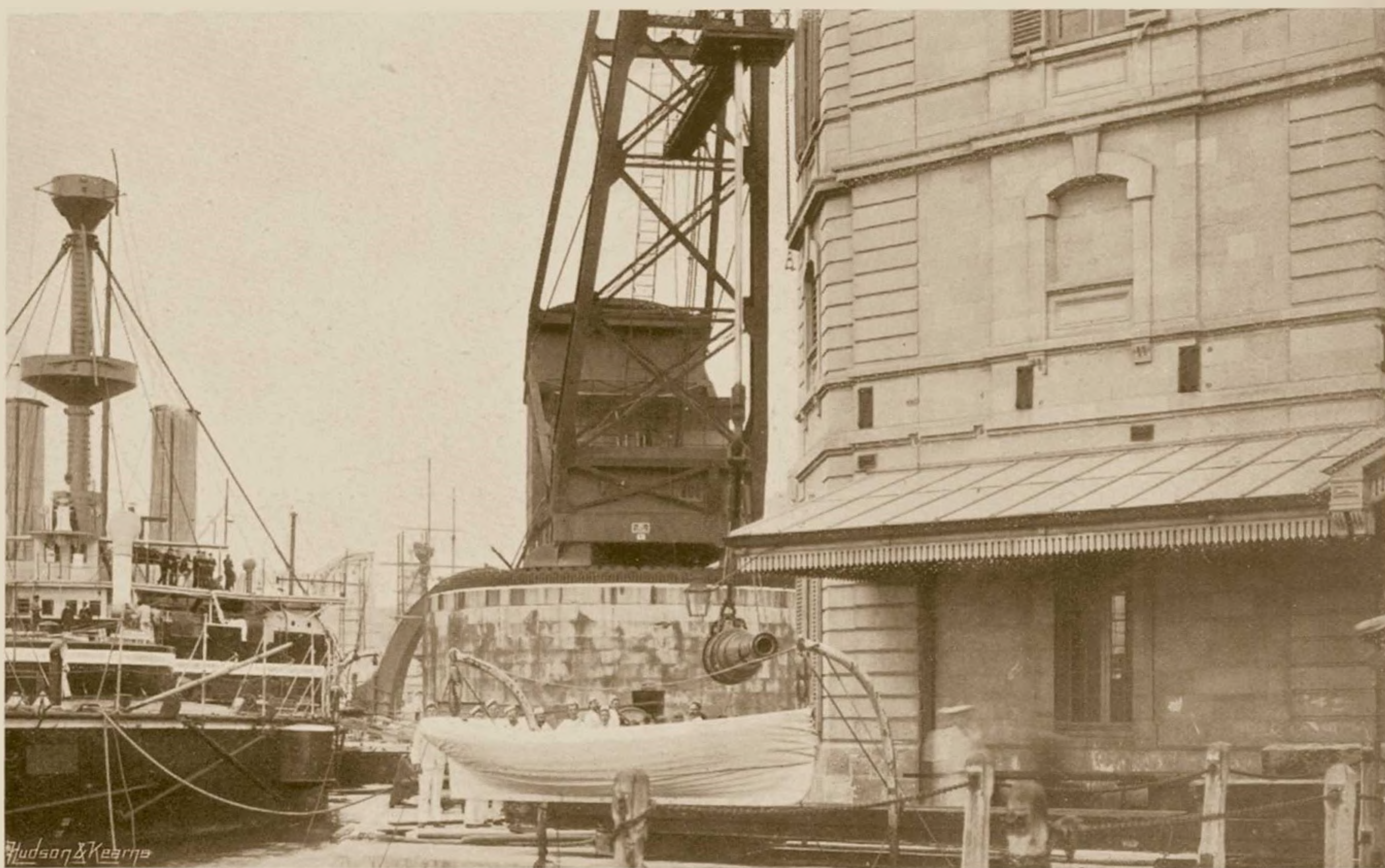
# MALTA DOCKYARD.

MALTA is the headquarters of the Mediterranean Fleet, as well as a station for refitting and coaling Her Majesty's ships passing to and from India and the Far East. The Naval Yard occupies the greater part of the water-sides of Dockyard and French Creeks. The former has on the left of its entrance a victualling department, where not less than a year's provisions and clothing for the fleet is stored, and there are bakeries for both soft bread and biscuit. The residence of the Admiral-Superintendent adjoins the victualling depôt. At the head of this creek the first dock was built. As steam vessels gradually replaced sailing ships, and required frequent docking, it was extended so as to form two docks when necessary and is now called "Double Dock." The outer one is 256-ft., and the inner 300-ft., giving a length on the flooring of 534-ft., with a depth of 25-ft. at the sill, and a width of 82-ft. at the coping, and 27-ft. on the floor. The right-hand side of the creek is a continuation of the dockyard, with official residences, ropery, and small workshops. With the introduction of ironclads, the docking accommodation was found insufficient. This led to the utilisation of the left shore of the adjoining opening, called French Creek, where the Somerset and Hamilton Docks were built, and named after the First Lords of the Admiralty who held office when they were planned. Our illustrations show the portion of the Naval Yard above the Somerset Dock, with the hydraulic crane, capable of lifting 160 tons, and therefore used for hoisting torpedo-boats or heavy guns. The building in the rear is appropriated to shipwrights' work.

We also give a full length view of the Hamilton Dock, the last erected in the Naval Yard, which the ill-fated



HYDRAULIC 160-TON CRANE IN FRENCH CREEK, AND VAIDALA BARRACKS.



HYDRAULIC CRANE REMOVING 67-TON GUN.

"Victoria" was the first to enter. Its length is 520-ft., breadth at coping 126-ft., and on flooring 63-ft., with a depth of 35-ft. on the sill, which is sufficient for any vessel of our fleets.

