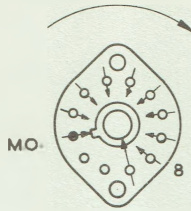
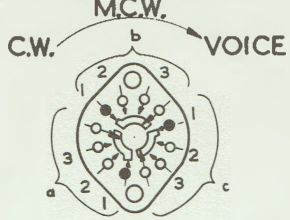


SWA
CHANNEL SELECTOR



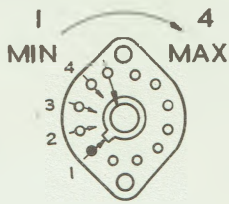
WAFERS b & f

SWE
SERVICE SELECTOR



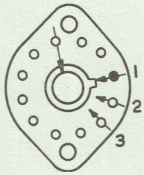
WAFERS b & d

SWD
AE. METER

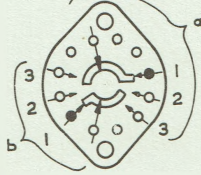


SWB
FREQUENCY RANGE

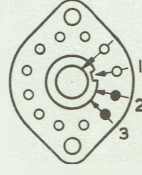
Mc/s 3-5-8 8-16 Mc/s 3-5-8 8-16 Mc/s 3-5-8 8-16



WAFER a

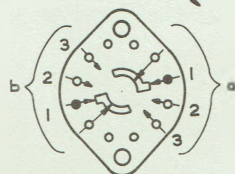


WAFER c



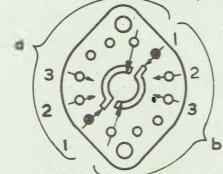
WAFER d

Mc/s 3-5-8 8-16



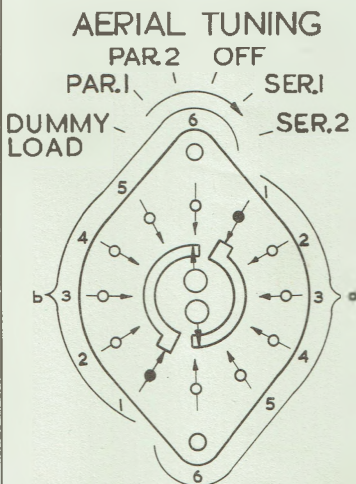
WAFER e

Mc/s 3-5-8 8-16



WAFER g

SWC



WAFERS a & b

PL9



PL10



REAR VIEW OF PLUGS.

NOTE - ALL SWITCHES ARE SHOWN IN EXTREME ANTICLOCKWISE POSITION. WAFERS ARE AS VIEWED FROM FRONT OR KNOB END OF SWITCH.

AP 100333 TRANSMITTER H.F.
CIRCUIT DIAGRAM (SHEET 2)