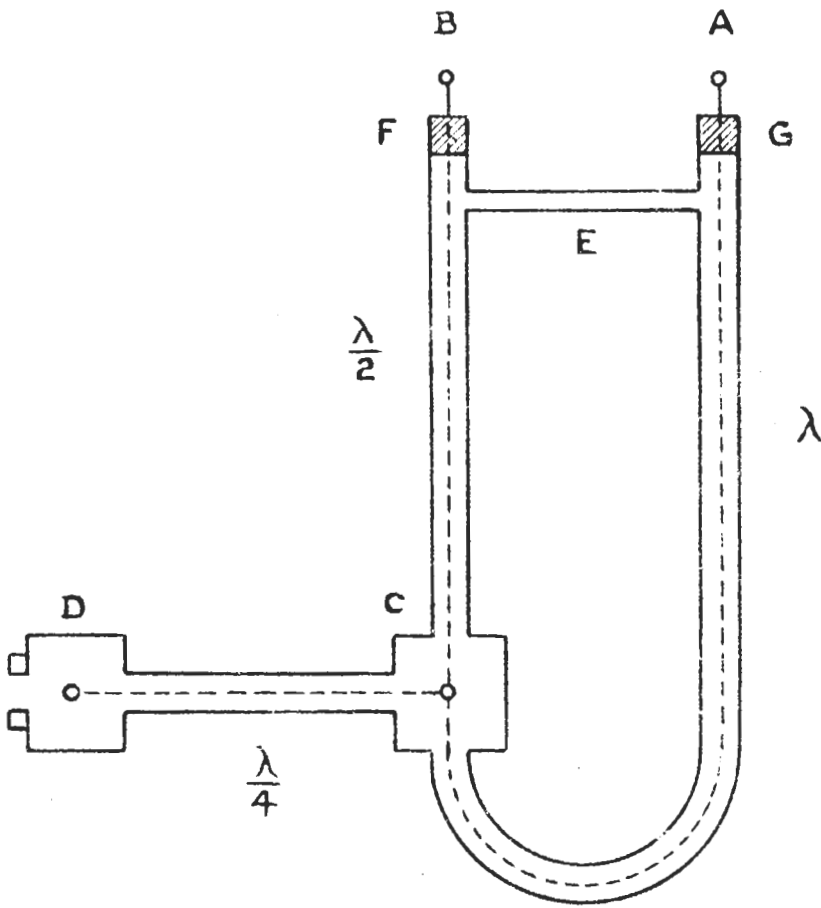


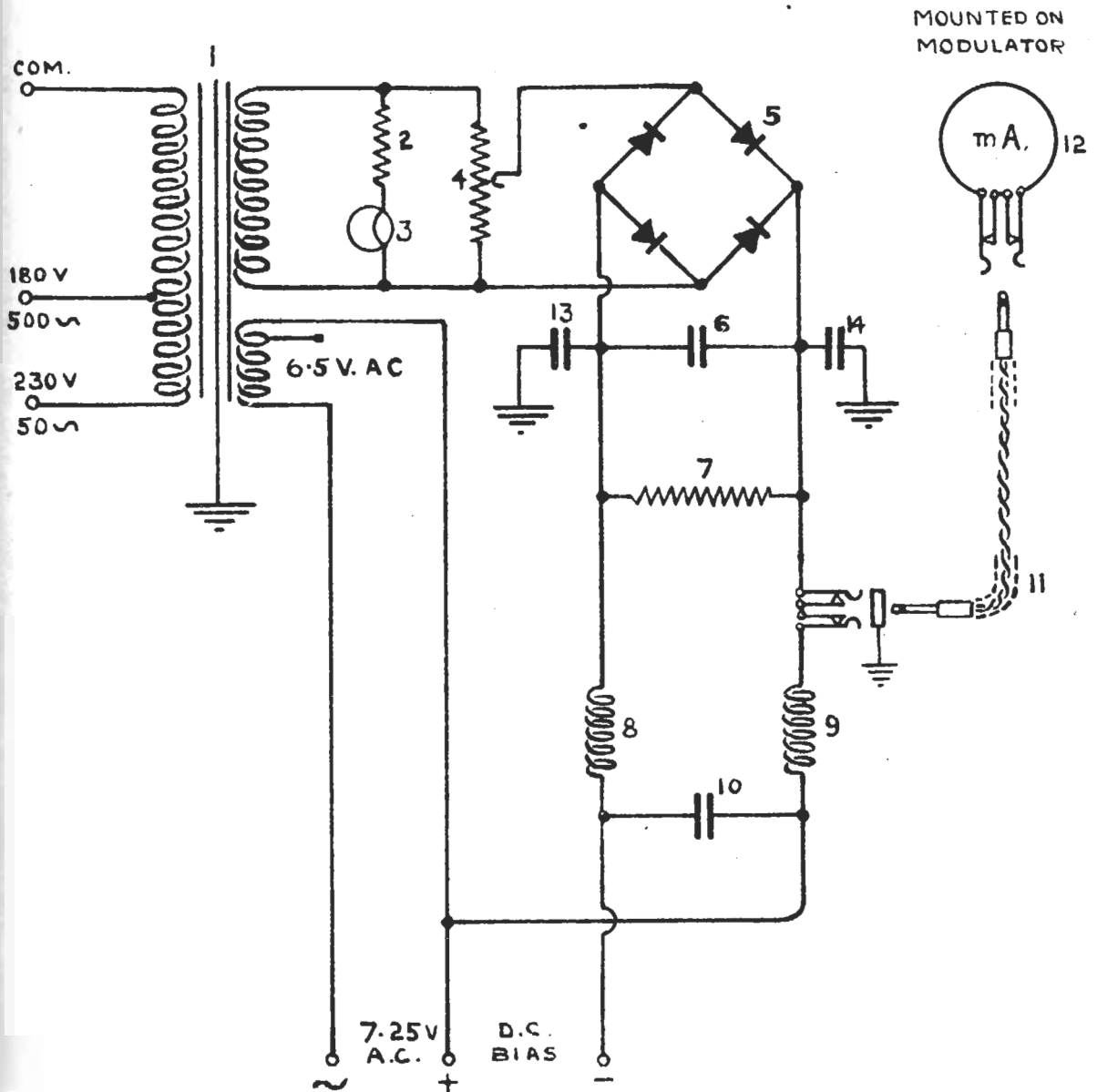
# AERIAL MATCHING TRANSFORMER

## SCHEMATIC DIAGRAM.



A	CONNECTOR AT END OF INNER.
B	CONNECTOR AT END OF INNER.
C	3-WAY JUNCTION BOX.
D	2-WAY JUNCTION BOX WITH RING SEAL.
E	EARTH CONNECTOR.
F	END SEALING PLUG.
G	END SEALING PLUG.

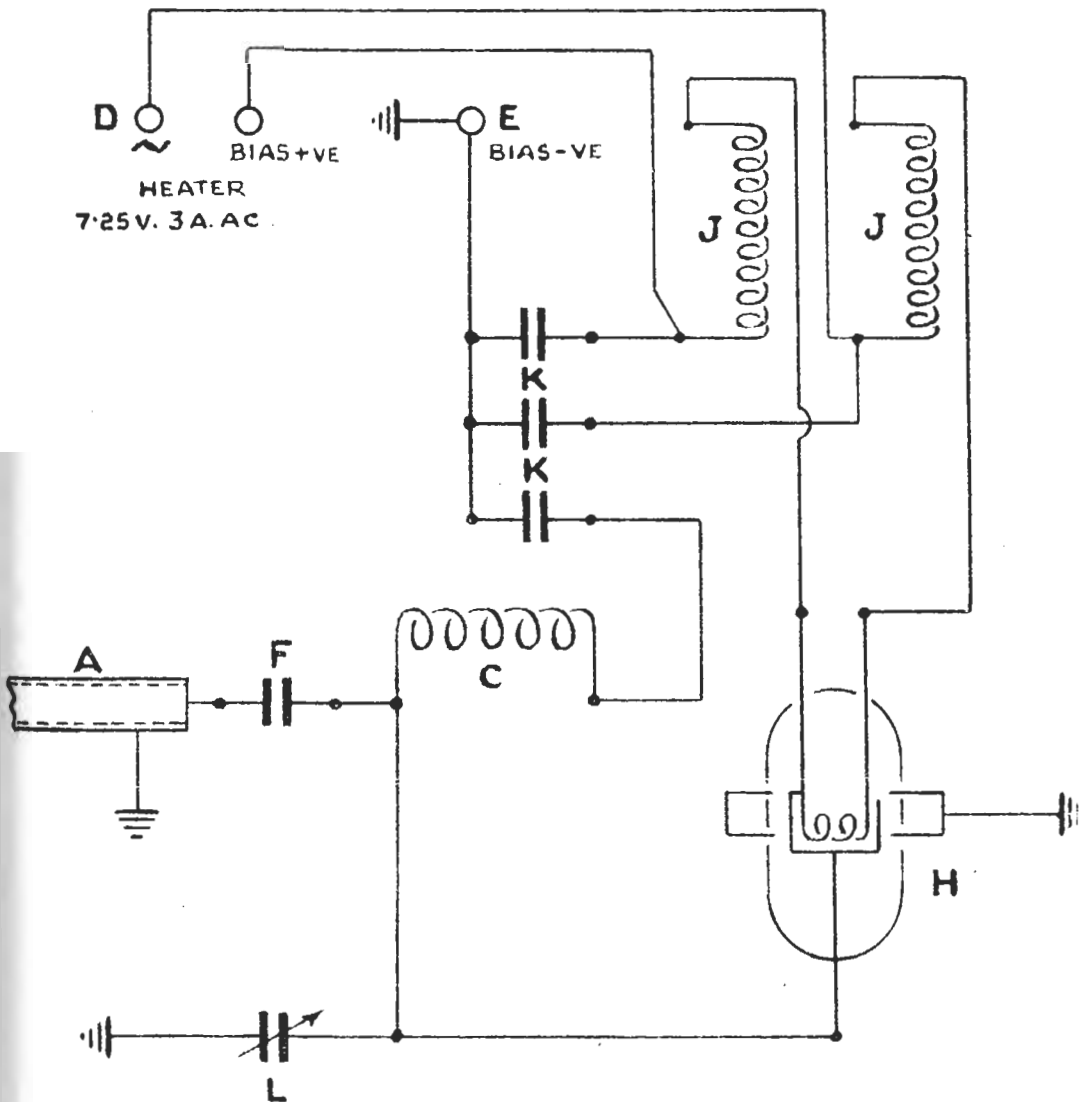
SHOWING CONNECTION TO MODULATOR PANEL.



MOUNTED ON MODULATOR

1	W3733	TRANSFORMER. 7.5V. 2.5V.D.C.	8		CHOKE.
2		RESISTANCE, 30 OHMS, 1WATT.	9		CHOKE
3	56 A	BULB.	10	W222	CONDENSER, 4 mfd, 800V. PAPER.
4	W5229	RESISTANCE, PRESET 2.5Ω 12WATT	11	W1034	PLUGS, PAIR OF, WITH SCREENED LEAD.
5		SELENIUM RECTIFIER, S.T. 8 C 280/LU 1014 A.	12	W406	MILLIAMMETER 0.25 mA.
6	885B	CONDENSER, 250 mfd, 12V. ELECTROLYTIC	13	W221	CONDENSER. 2 mfd. 800 V
7	W155B	RESISTANCE, 1000Ω, 1/2 WATT.	14	W221	CONDENSER. 2 mfd. 800 V.

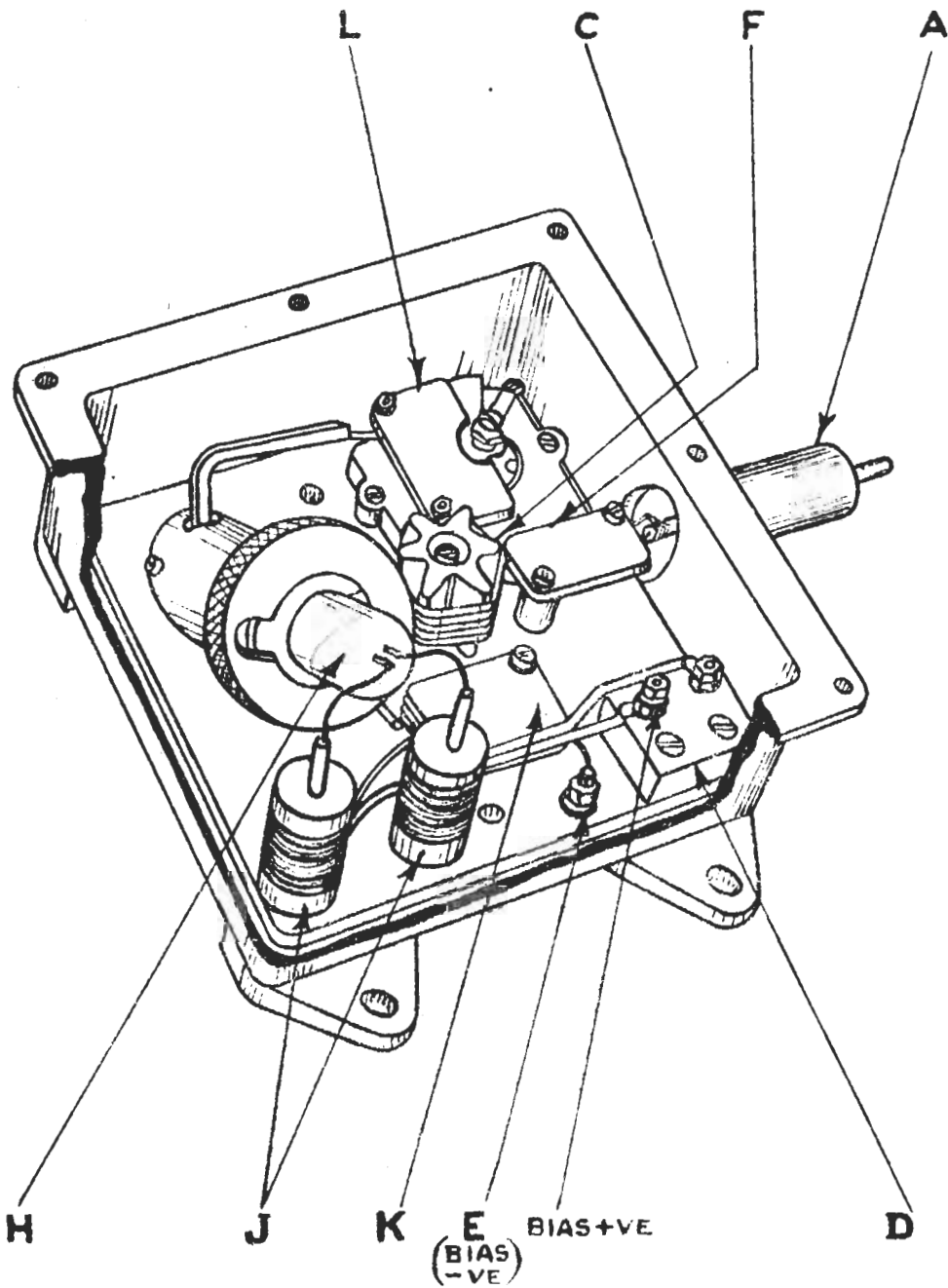
# DIODE SWITCH CIRCUIT DIAGRAM.



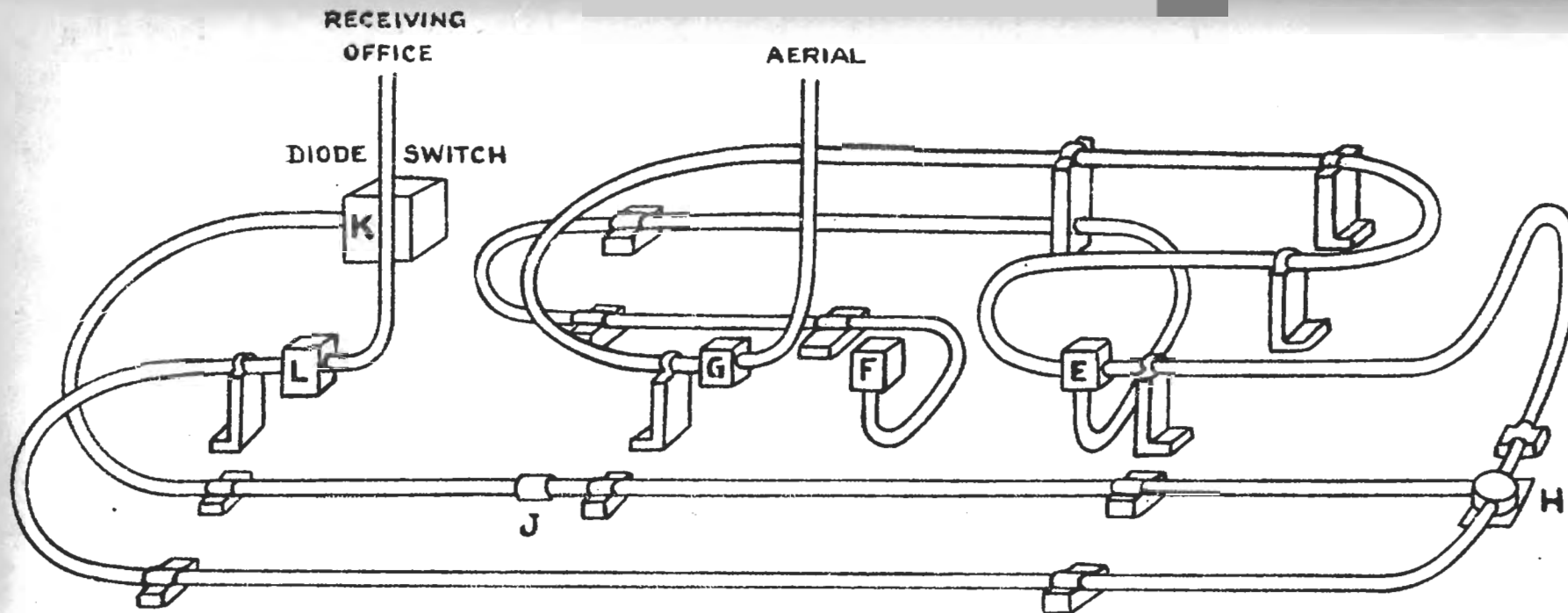
WHEN SPARK GAP IS USED HEATER CHOKES WILL NOT BE CONNECTED.

LETTER	DESCRIPTION
A	END OF PYROTENAX TRANSFORMER
C	TUNING COIL
D	TERMINAL BOARD
E	EARTH TERMINAL
F	BLOCKING CONDENSER ( $0.001 \mu F$ )
H	DIODE OR SPARK GAP
J	HEATER CHOKES <small>NEW DESIGN 32 FULL TURNS OF 22 SWG ENAMELED COPPER WIRE</small>
K	BLOCKING CONDENSERS ( $0.001 \mu F$ )
L	TUNING CONDENSER.

# VIEW OF DIODE SWITCH.



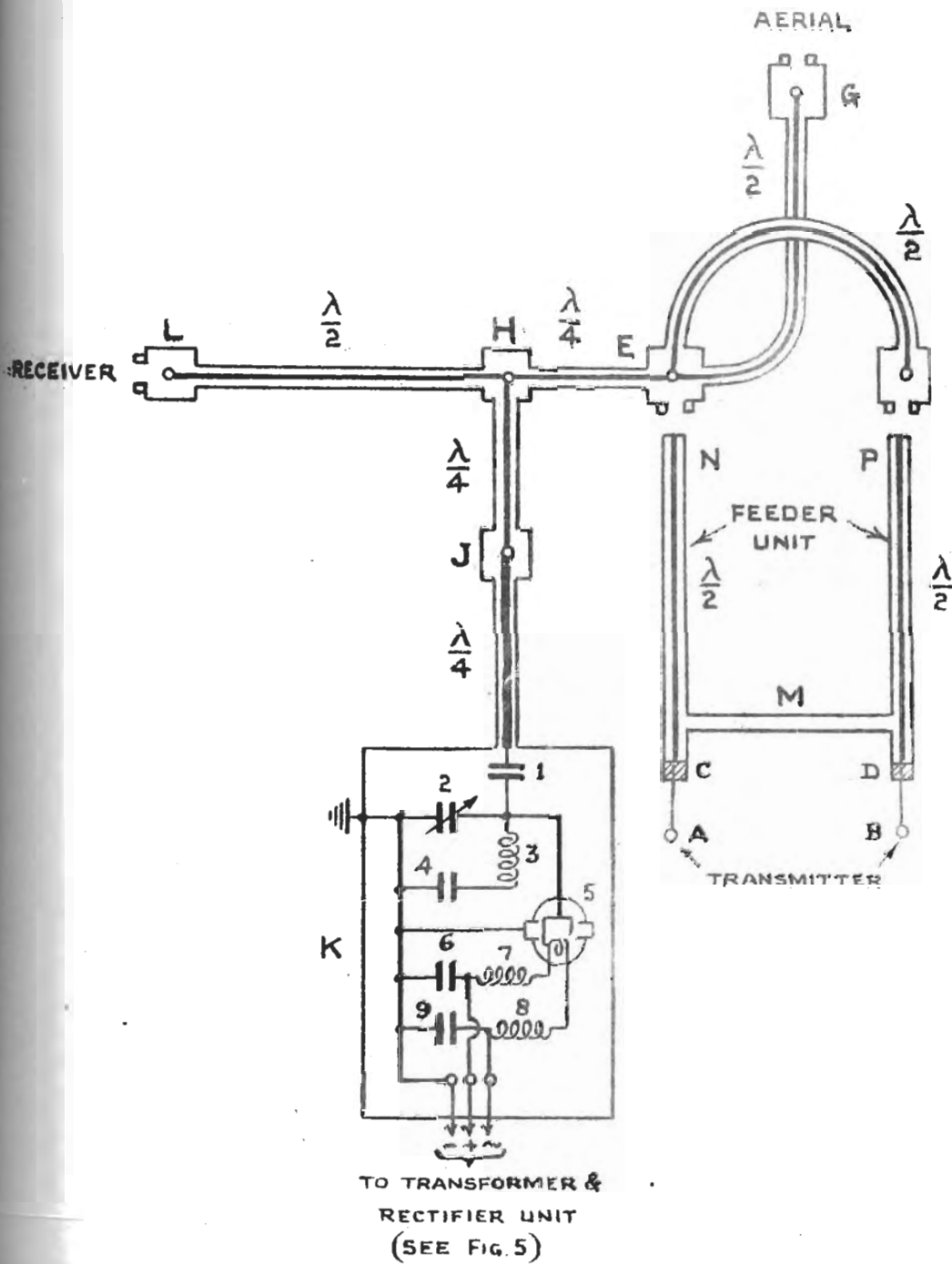
LETTER	DESCRIPTION
A	END OF PYROTENAX TRANSFORMER
C	TUNING COIL
D	TERMINAL BOARD
E	EARTH TERMINAL
F	BLOCKING CONDENSER ( $0.001 \mu\text{F}$ )
H	DIODE OR SPARK GAP
J	HEATER CHOKES <small>NEW DESIGN 32 FULL TURNS OF 22 SWG ENAMELED COPPER WIRE</small>
K	BLOCKING CONDENSERS ( $0.001 \mu\text{F}$ )
L	TUNING CONDENSER



E	4-WAY JUNCTION BOX WITH RING SEAL FOR TRANSMITTER CONNECTION.
F	2-WAY JUNCTION BOX WITH RING SEAL FOR TRANSMITTER CONNECTION.
G	2-WAY JUNCTION BOX WITH RING SEAL FOR AERIAL CONNECTION.
H	3-WAY JUNCTION BOX.
J	2-WAY JUNCTION BOX.
K	DIODE SWITCH.
L	2-WAY JUNCTION BOX WITH RING SEAL FOR RECEIVER CONNECTION.

# DIODE SWITCH & FEEDER UNIT SCHEMATIC DIAGRAM.

13

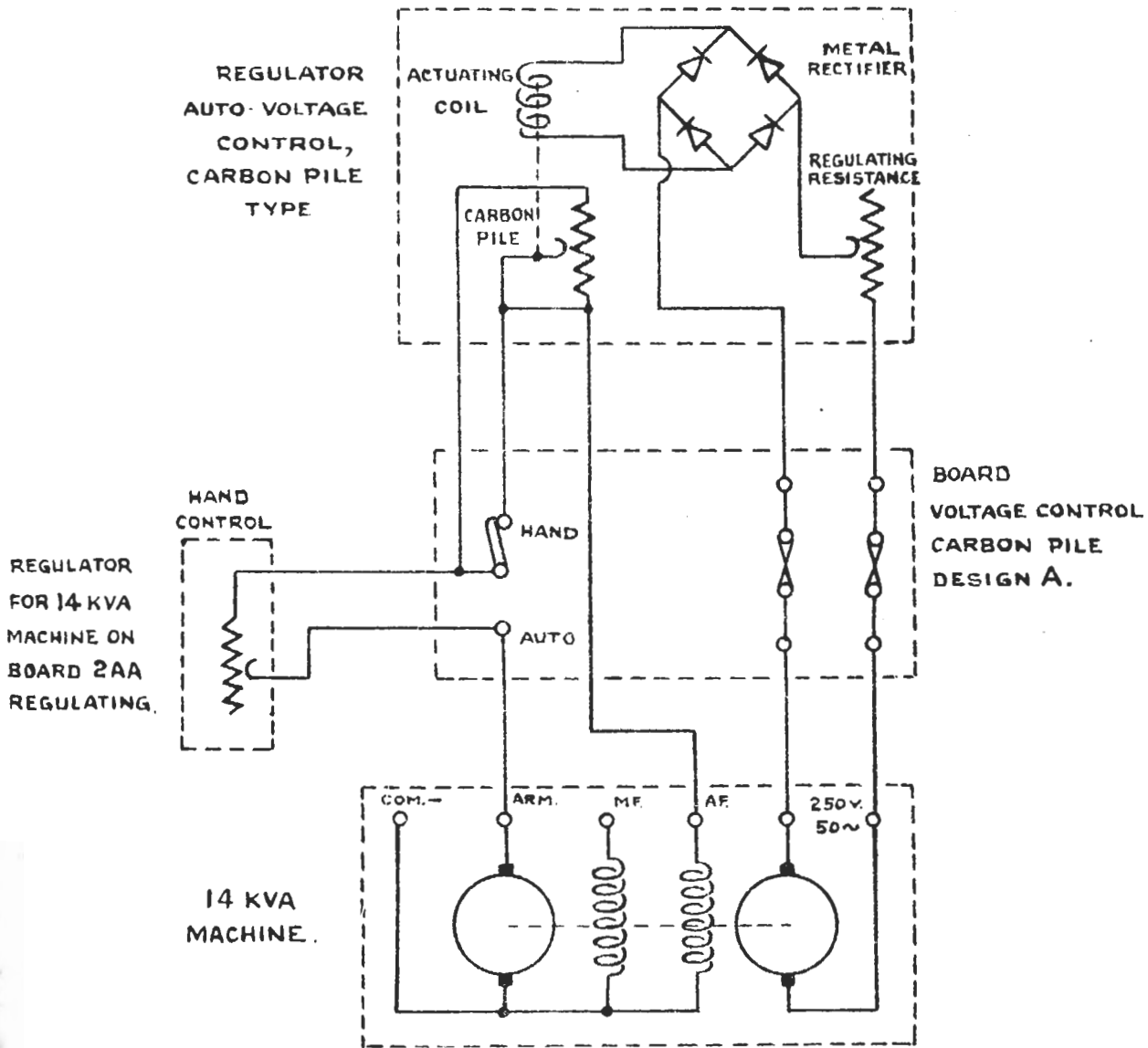


1	W1878	CONDENSER, 0.001 MFD. T.C.C.
2		CONDENSER, VAR., BULGIN TYPE SW. 53
3		COIL.
4	W1878	CONDENSER, 0.001 MFD. T.C.C.
5	CV8	VALVE CV8 CLASS B <sup>x</sup> .
6	W1878	CONDENSER, 0.001 MFD. T.C.C.
7		NEW DESIGN 32 FULL TURNS CHOKE. OF 22 S.W.G ENAMEL <sup>3</sup> COPPER W.
8		NEW DESIGN 32 FULL TURNS CHOKE. OF 22 S.W.G ENAMEL <sup>3</sup> COPPER WIRE
9	W1878	CONDENSER 0.001 MFD. T.C.C.

A & B	CONNECTORS AT ENDS OF INNERS.
C & D	SEALING PLUGS
E	4-WAY JUNCTION BOX WITH RING SEAL FOR TRANSMITTER CONNECTION.
F	2-WAY JUNCTION BOX WITH RING SEAL FOR TRANSMITTER CONNECTION.
G	2-WAY JUNCTION BOX WITH RING SEAL FOR AERIAL CONNECTION.
H	3-WAY JUNCTION BOX.
J	2-WAY JUNCTION BOX.
K	DIODE SWITCH.
L	2-WAY JUNCTION BOX WITH RING SEAL FOR RECEIVER CONNECTIONS.
M	EARTHING CLAMP.
N & P	HALF-WAVELENGTH CONNECTIONS.

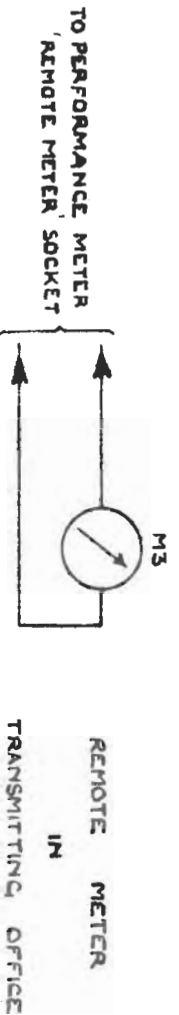
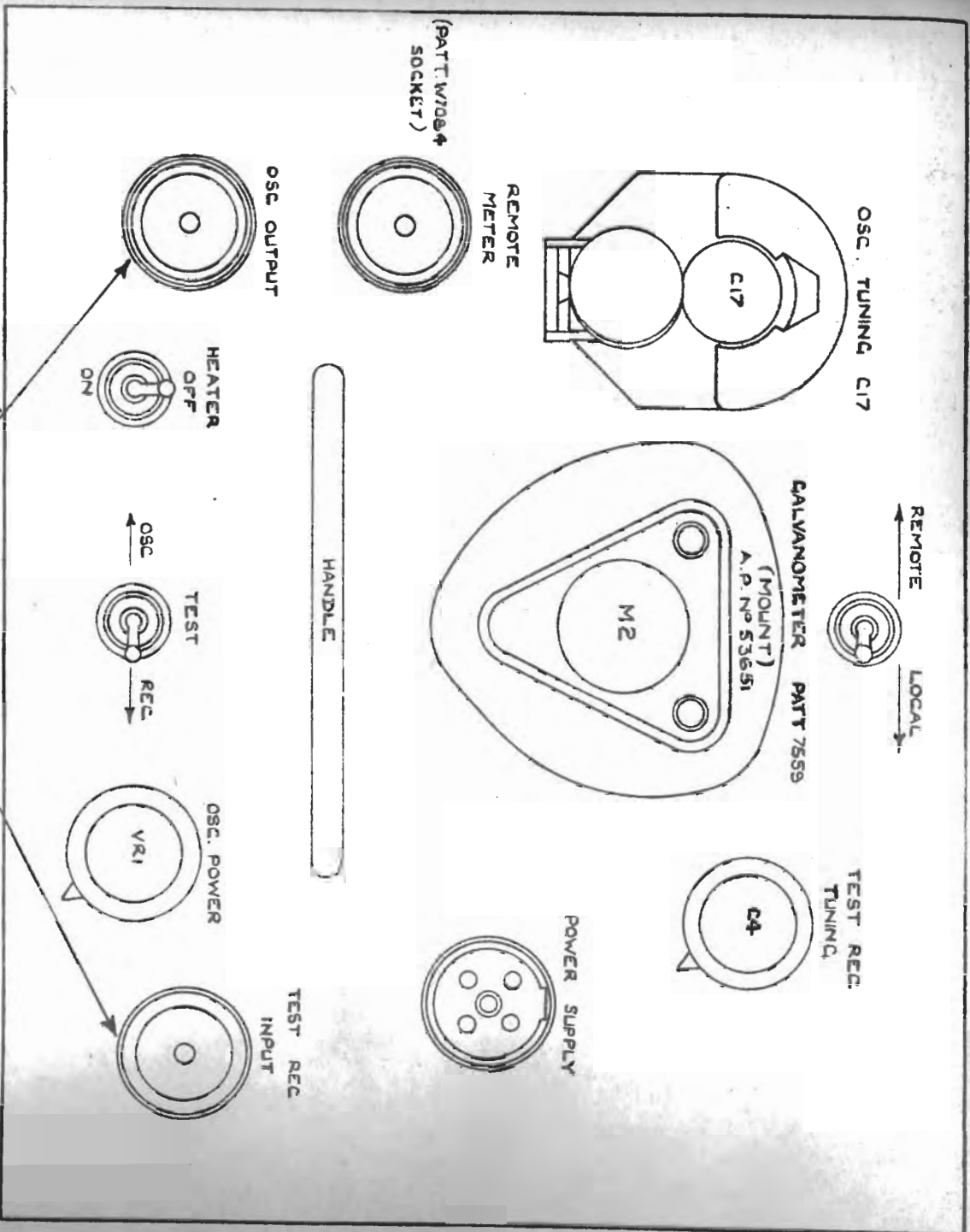
# 14 KVA MACHINE

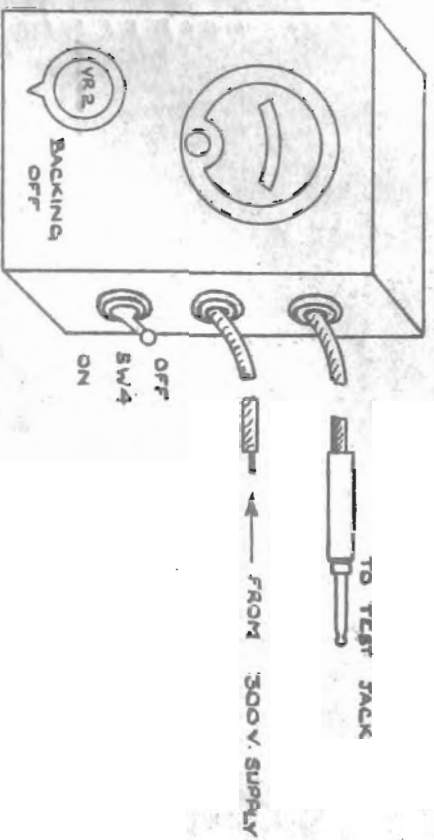
## AUTO-VOLTAGE CONTROL WIRING.



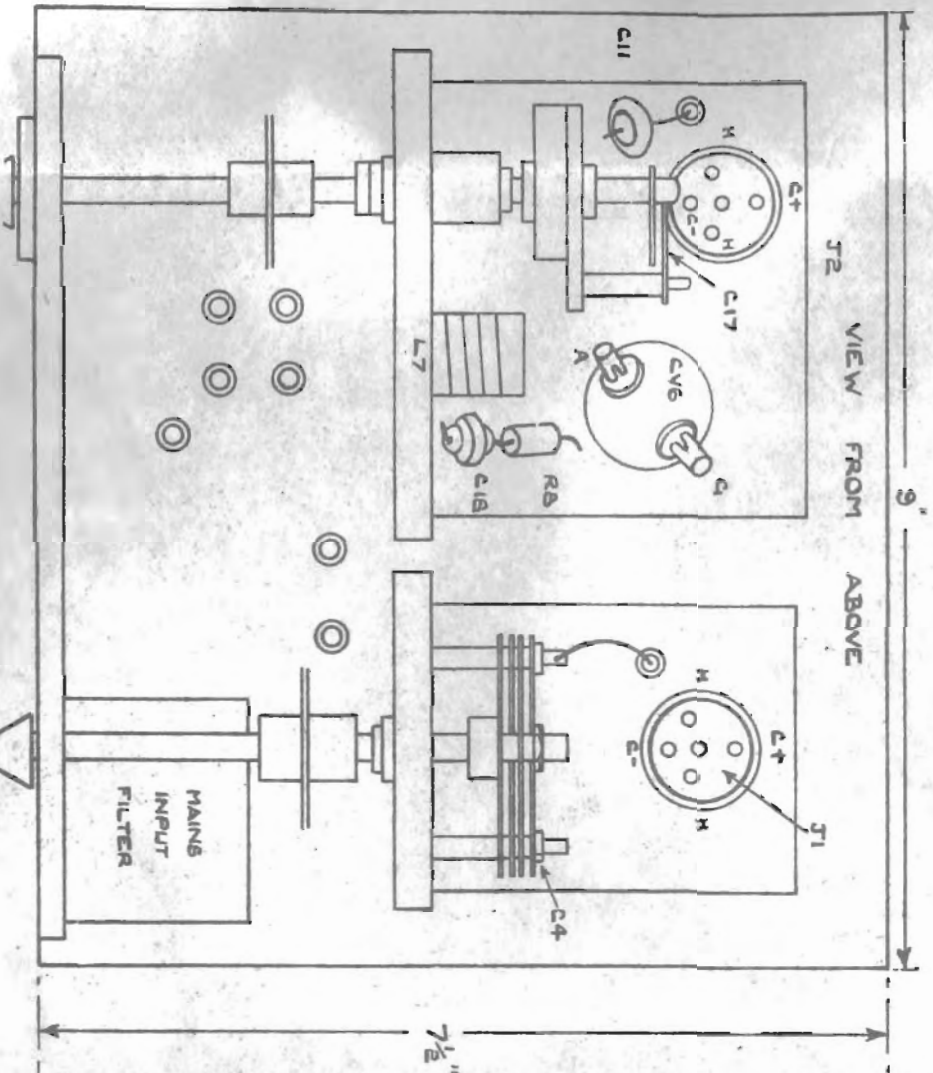
NOTE:- DIAGRAM SHOWS WIRING FOR ONE MACHINE ONLY.







METER MOUNT DESIGN 5  
(PATT: 56520)  
USE GALVANOMETER (PATT: 56637)



PATT. 53914

PERFORMANCE

METER

DESIC

3

VIEWS