

FIG. C

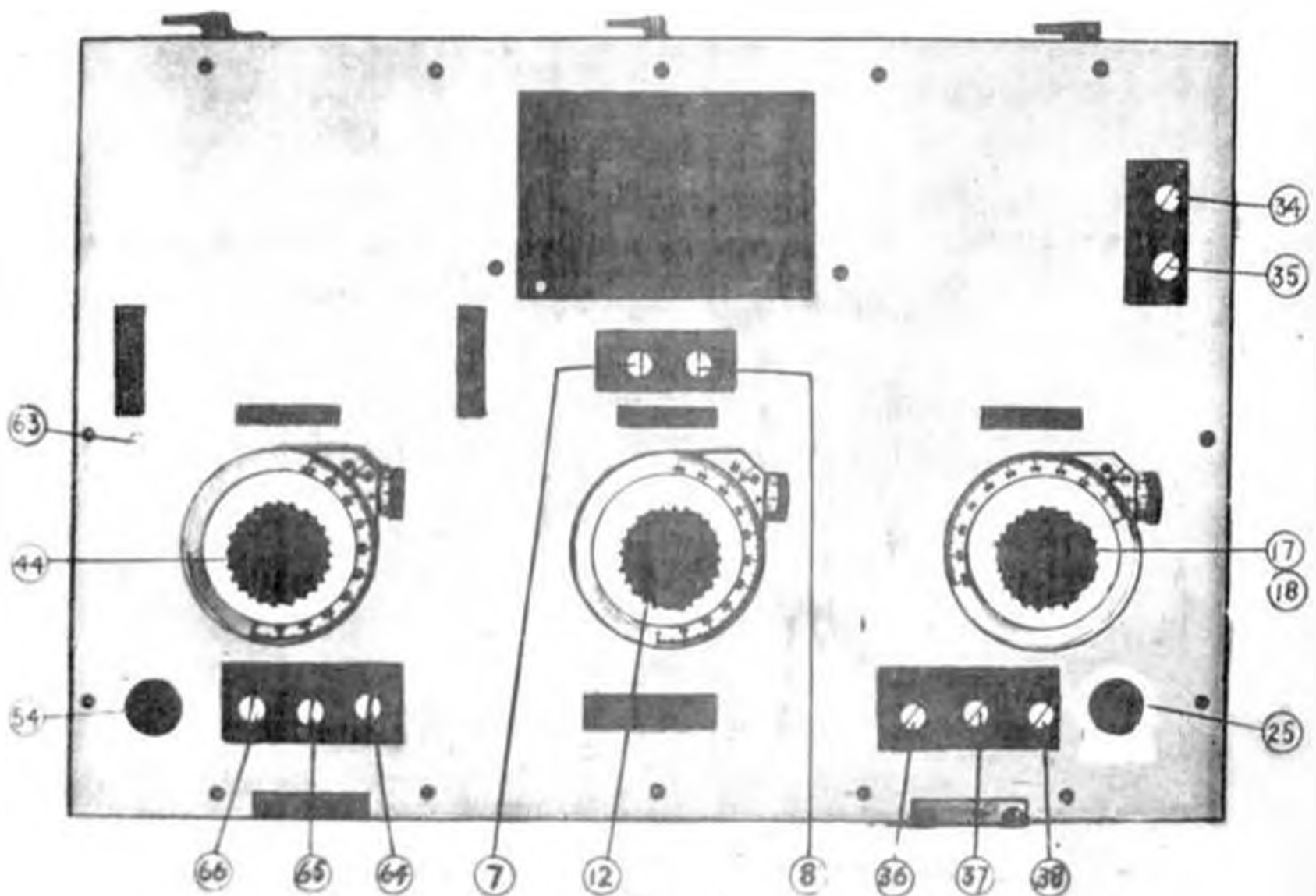


FIG. d

initially correct. If adjustments are made it may be necessary to adjust the heterodyne and detector conditions simultaneously. With practice this can be done over large ranges on the condenser if necessary.

Terminals (38)(37) and (34) are connected to 50-volt anode and 4 volt filament supplies for the two detector valves (1) and (2). Terminals (34)(35) and (36) are connected to 100 volt anode and 4 volt filament supplies for the heterodyne valve (40).

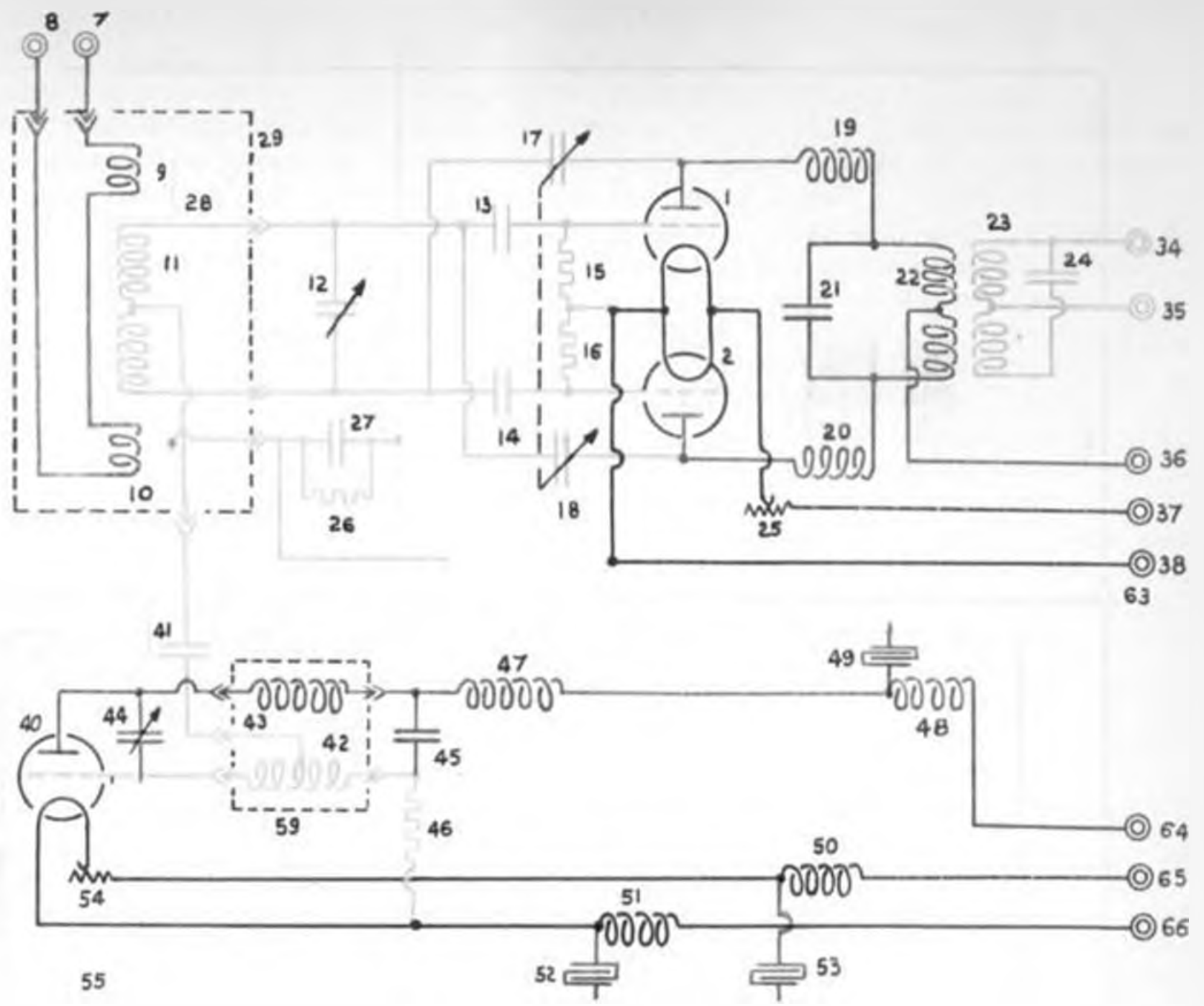


FIG. 2

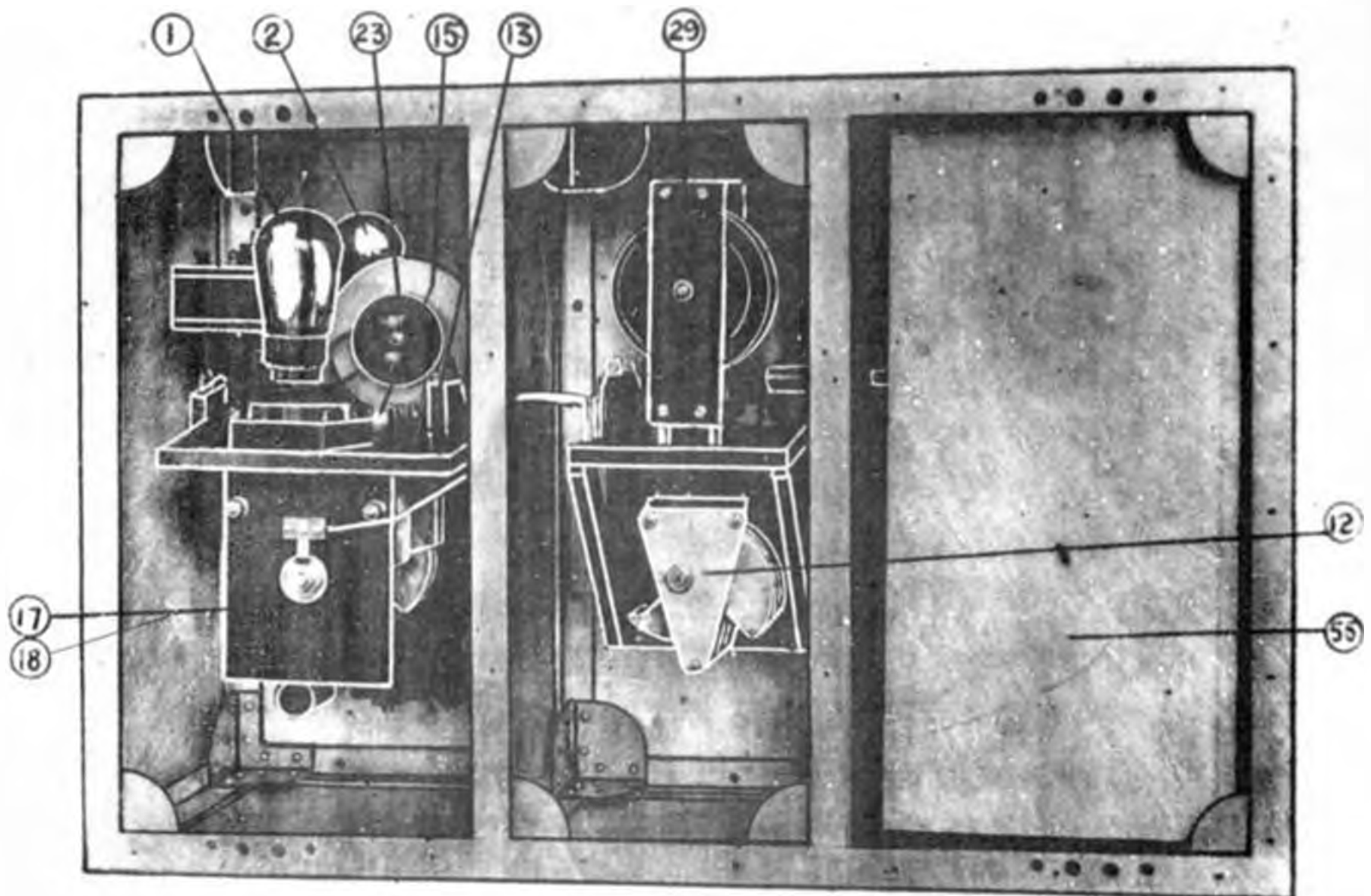


FIG. 1