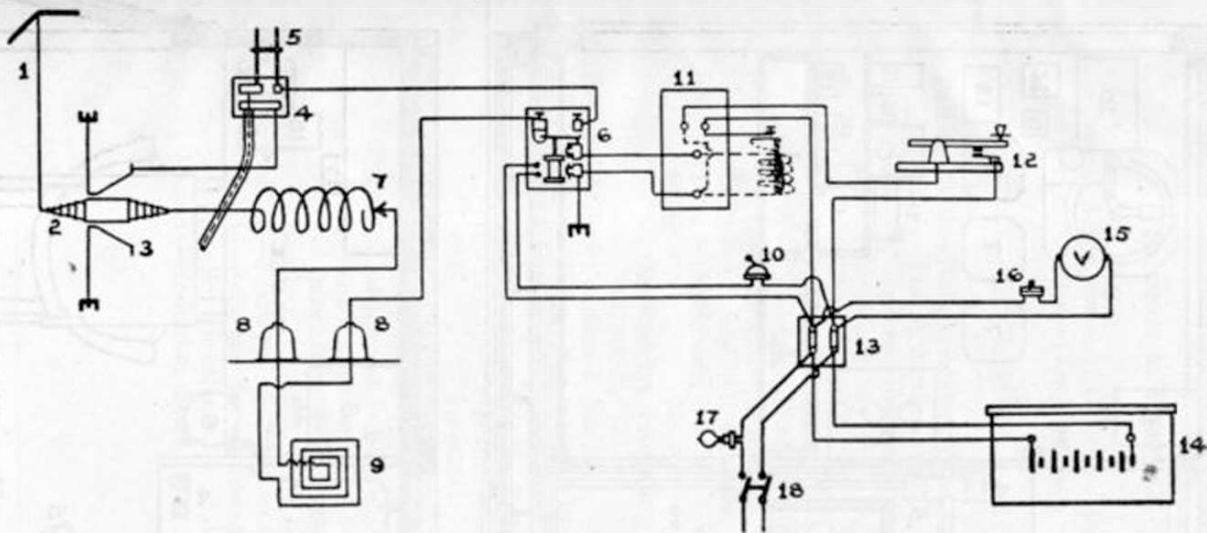


DIAGRAM OF EMERGENCY CIRCUIT

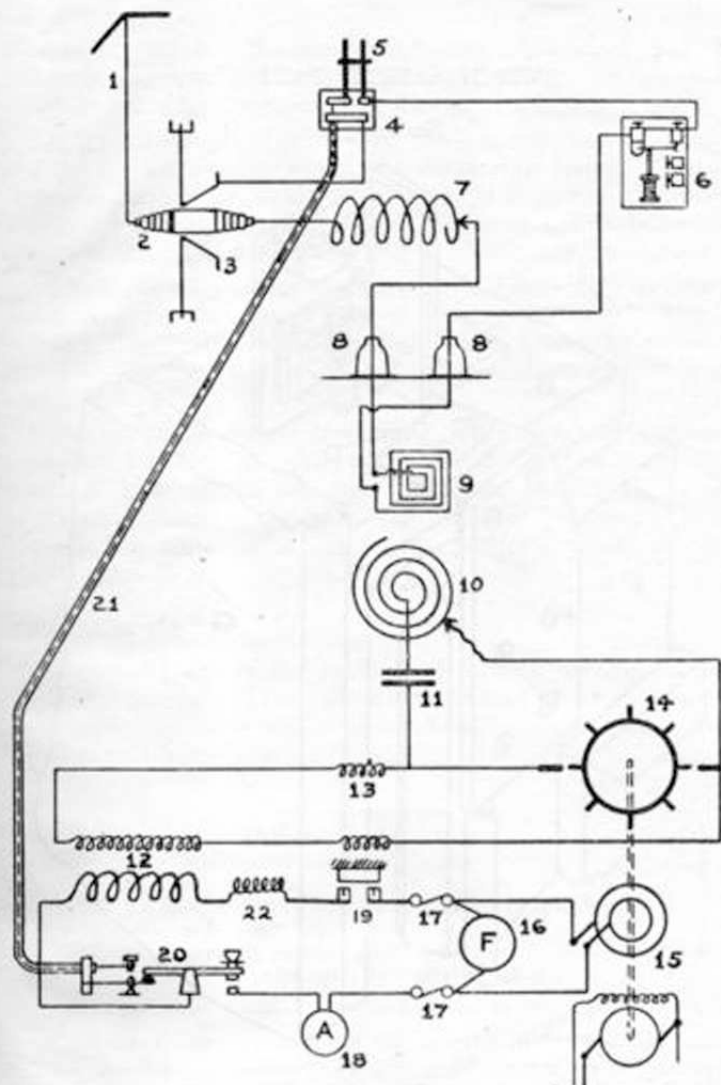


REFERENCE.

- | | | |
|---|---|--|
| 1. Aerial; | 8. Cupboard Insulators. | 14. Patt. 1552, Cells, Accumulator Box complete. |
| 2. Patt. 1719, Insulator Deck. | 9. Mutual. | 15. Patt. 983, Voltmeter. |
| 3. Earth Ring. | 10. Patt. 328, Switch, Non-Watertight. | 16. Patt. 1917, Push-Bulkhead. |
| 4. Patt. 1326, Fitting Earth Ring. | 11. Patt. 1670, Coil for Emergency Set. | 17. Patt. 4548, Lampholder and Lamp. |
| 5. Patt. 1531, Shunt for Radiation Meter, | 12. Patt. 2426, Key, Morse. | 18. Patt. 2328, Switch Telephone. |
| 6. Patt. 1148, Switch Send-Receive. | 13. Patt. 4547, Terminal Block. | |
| 7. Patt. 1603, Coil Aerial. | | |

FIG. 11.

DIAGRAM OF TRANSMITTING CIRCUIT.



REFERENCE.

- | | |
|--------------------------------------|-----------------------------------|
| 1. Aerial. | 12. Patt. 1668, Transformer. |
| 2. Patt. 1719, Insulator Deck. | 13. Patt. 283, Coils, Protecting. |
| 3. Earth Ring | 14. Rotary Spark Gap. |
| 4. Patt. 1326, Earth Ring Fitting. | 15. Patt. 4719, Converter Rotary. |
| 5. Patt. 1531, Shunt for Rad. Meter. | 16. Patt. 4840, Frequency Meter. |
| 6. Patt. 1148, Switch Send-Receive. | 17. Patt. 772, Cut-Outs, D.P. |
| 7. Patt. 1603, Coil, Aerial. | 18. Patt. 4839, Ammeter. |
| 8. Cupboard Insulators. | 19. Patt. 1790, Switch, Safety. |
| 9. Mutual, } Part of Patt. 4842, | 20. Patt. 310, Key H.O. |
| 10. Primary, } Transmitter, | 21. Patt. 751, Concentric Cable. |
| 11. Condenser, } Type 12. | 22. Patt. 238, Impedance Coil. |

FIG. 9.

7

Copy No. 491

1-49

S.S. 7.

HANDBOOK
FOR
TYPE 12 W/T SETS.
1917.

CONFIDENTIAL.

Attention is called to the Penalties attaching to any Infraction of the Official Secrets Act.

C.B. 562.

HANDBOOK

FOR

TYPE 12 W/T SETS.

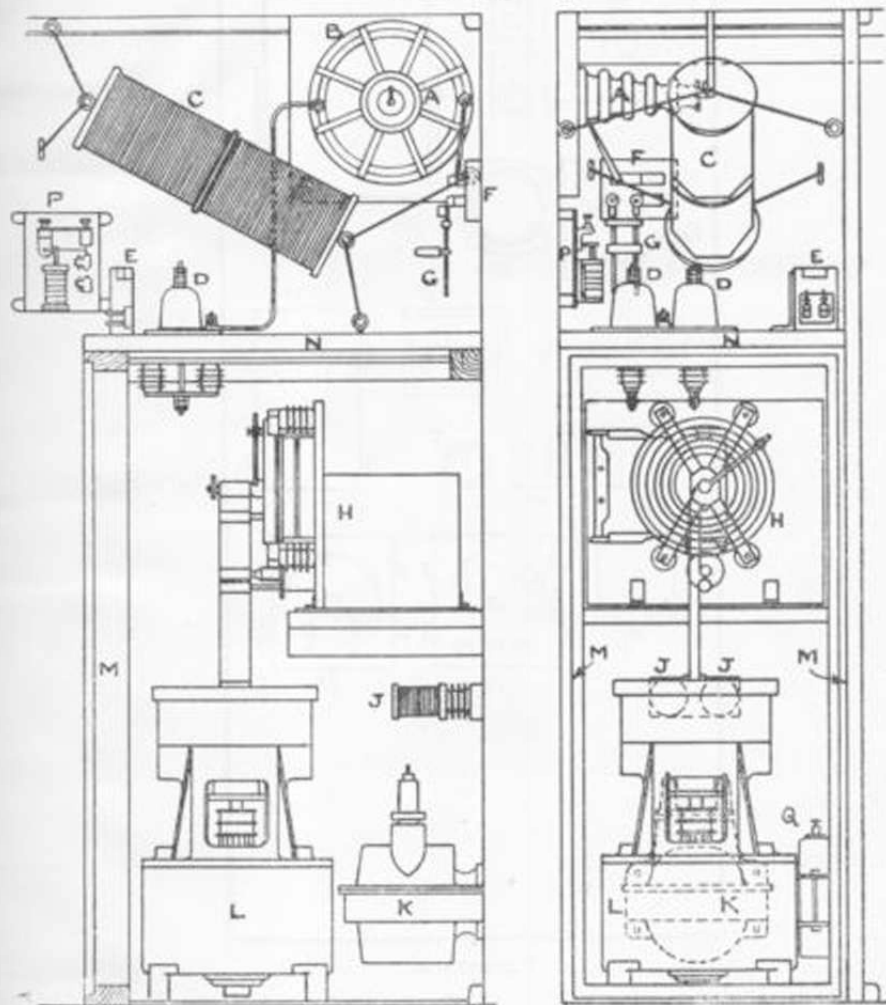
1917.

ADMIRALTY,
GUNNERY BRANCH,
G. 03625/17, *October 1917.*

CUPBOARD AND INSTRUMENTS.

DOOR NOT SHOWN.

Scale:— $\frac{1}{16}$ size.



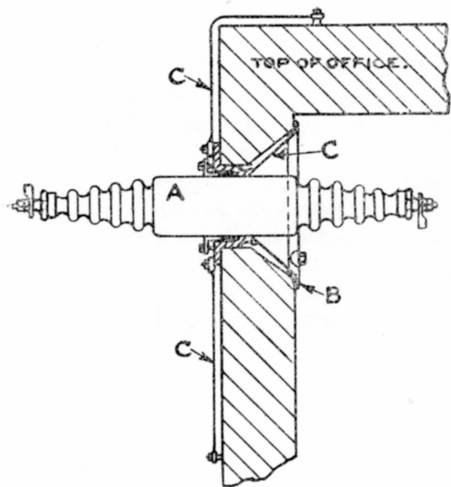
REFERENCE.

- | | |
|---|---|
| A. Patt. 1719, Insulator Deck, Type 4n. | J. Patt. 283, Coils Protecting. |
| B. Earth Ring. | K. Patt. 1668, Transformer |
| C. Patt. 1603, Coil Aerial. | L. Patt. 4719, Converter Rotary, Type 12. |
| D. Cupboard Insulator. | M. Door Frame. |
| E. Patt. 1790, Switch Safety. | N. Top of Cupboard. |
| F. Patt. 1326, Earth Ring Fitting. | P. Patt. 623, Switch Send Receive. |
| G. Patt. 1531, Shunt for Radiation Meter. | Q. Patt. 238, Impedance Coil. |
| H. Patt. 4842, Transmitter Type 12 | |

FIG. 1.

DECK INSULATOR

Scale:— $\frac{1}{12}$ size



REFERENCE.

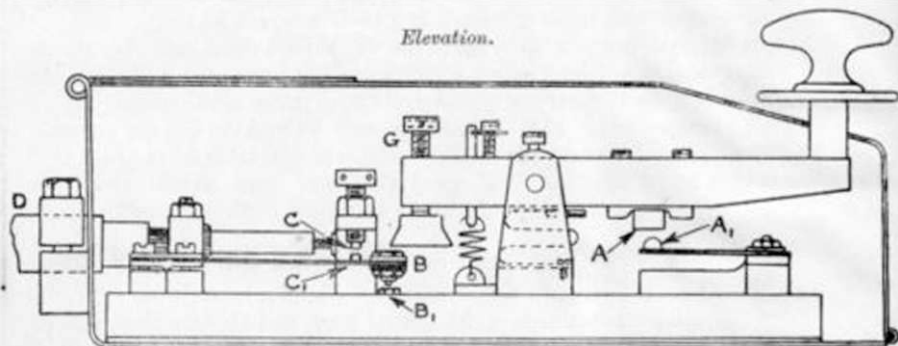
- A Patt. 1719, Insulator Deck, Type 4B
- B. Earth Ring.
- C. Connections to Earth.

FIG. 4.

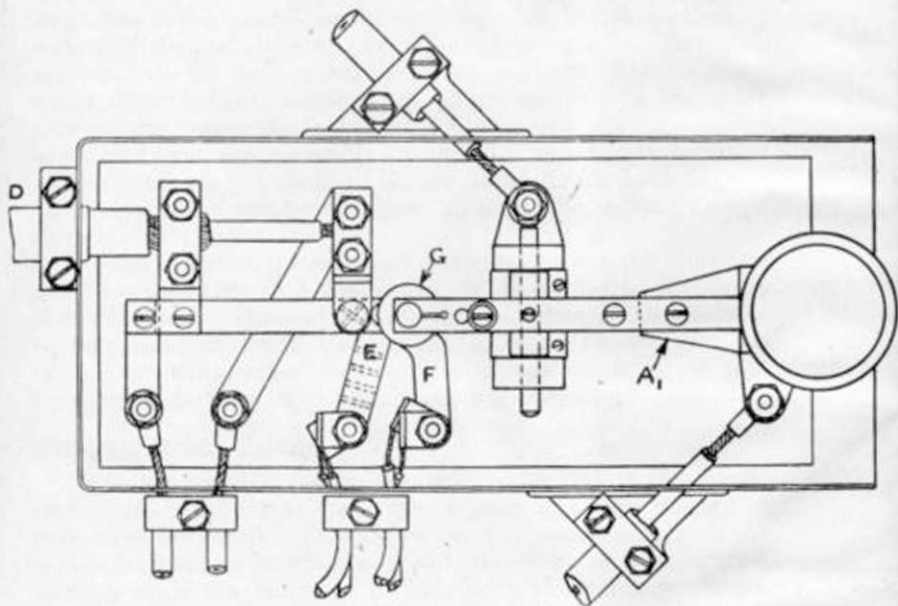
KEY TYPE 2-4-10 (PATT. 310).

Scale:— $\frac{1}{2}$ size.

Elevation.



Plan



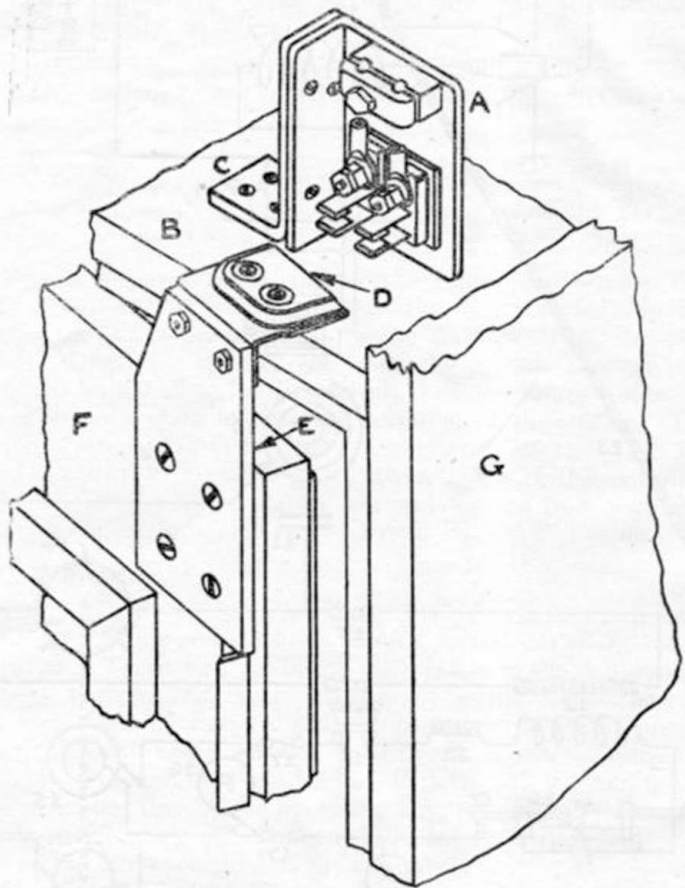
REFERENCE.

- A, A₁. Main Contacts.
- B, B₁. Contacts in Circuit of Switch Protecting.
- C, C₁. " " " Aerial and Earth.
- D. Concentric Cable.
- E. Flexible Connection to Contact B.
- F. Connection to Contact B.
- G. Screw Adjusting Beat of Key.

FIG. 5.

SWITCH SAFETY (PATT. 1790)

Scale:— $\frac{1}{4}$ size.



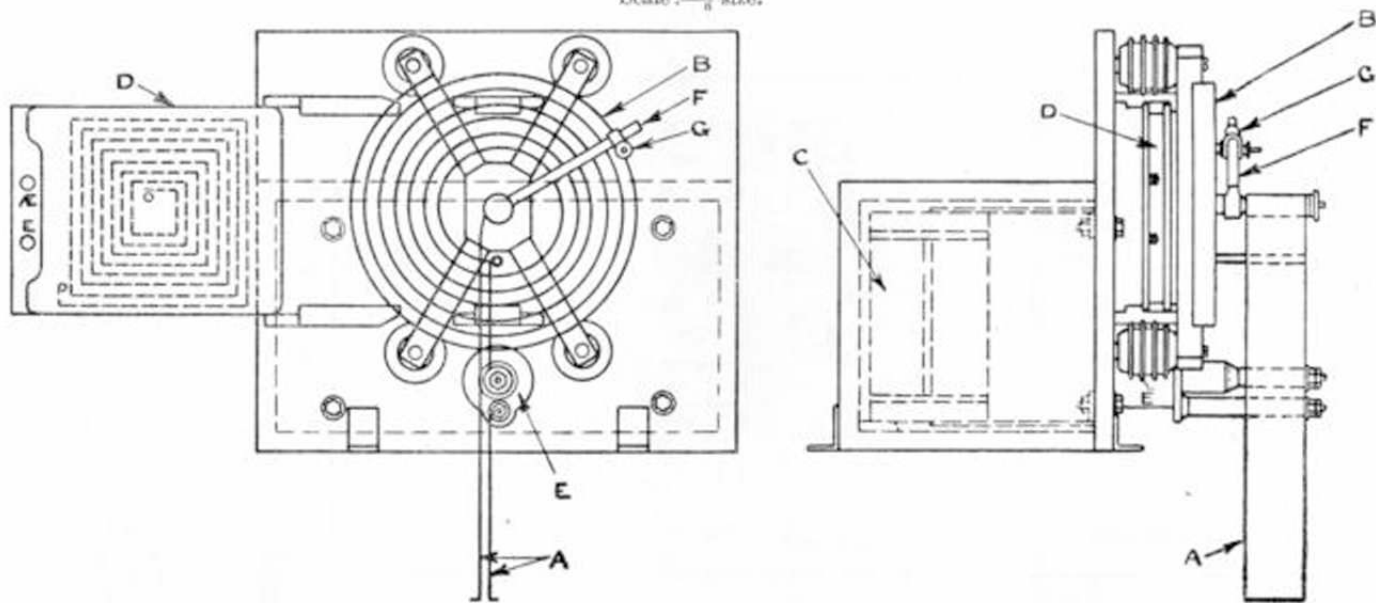
REFERENCE.

- A. Switch.
- B. Top of Cupboard.
- C. Steel Angle Holding Switch.
- D. Chopper or Switch.
- E. Steel Plate carrying Chopper.
- F. Door of Cupboard.
- G. Partition Board, Part of.

FIG. 10.

TRANSMITTER, TYPE 12 (PATT. 4842).

Scale: $-\frac{1}{8}$ size.



- A. Connections to Primary.
- B. Primary.
- C. Condenser.

REFERENCE.

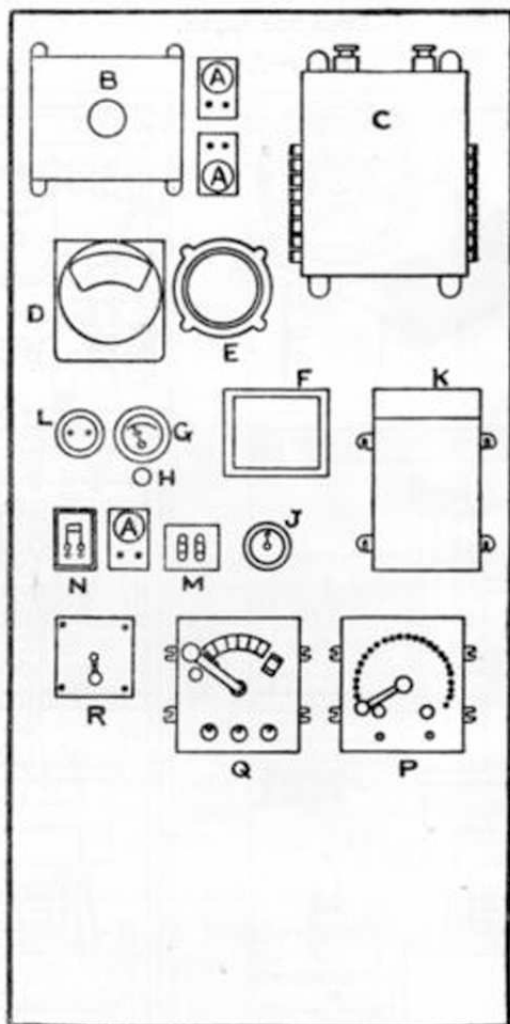
- D. Mutual.
- E. Concentric Terminal.

- F. Revolving Arm
- G. Tuning Clip.

FIG. 3.

INSTRUMENT BOARD.

Scale:— $\frac{1}{12}$ size.



REFERENCE.

- | | |
|--------------------------------------|--|
| A. Patt. 4548, Lampholder. | K. Patt. 1670, Coil for Emergency Set. |
| B. Patt. 2808, Circulator Regulator. | L. Socket for Wandering Lead. |
| C. Patt. 588, Distribution Box. | M. Patt. 4547, Terminal-Block (Double Pair). |
| D. Patt. 4839, A.C. Ammeter. | N. Patt. 2328, Switch Telephone. |
| E. Patt. 4840, Frequency Meter. | P. Patt. 4721, Field Regulator. |
| F. Patt. 722, Cut-outs D.P. | Q. Patt. 4720, Starter for Rotary Converter. |
| G. Patt. 983, Voltmeter. | R. Patt. 891, Switch D.C. Supply. |
| H. Patt. 1917, Push (for Voltmeter). | |
| J. Patt. 328, Switch. | |

FIG. 2.