

RESTRICTED
FOR OFFICIAL USE ONLY

B.R. 1612 (RESTRICTED) (PROVISIONAL)

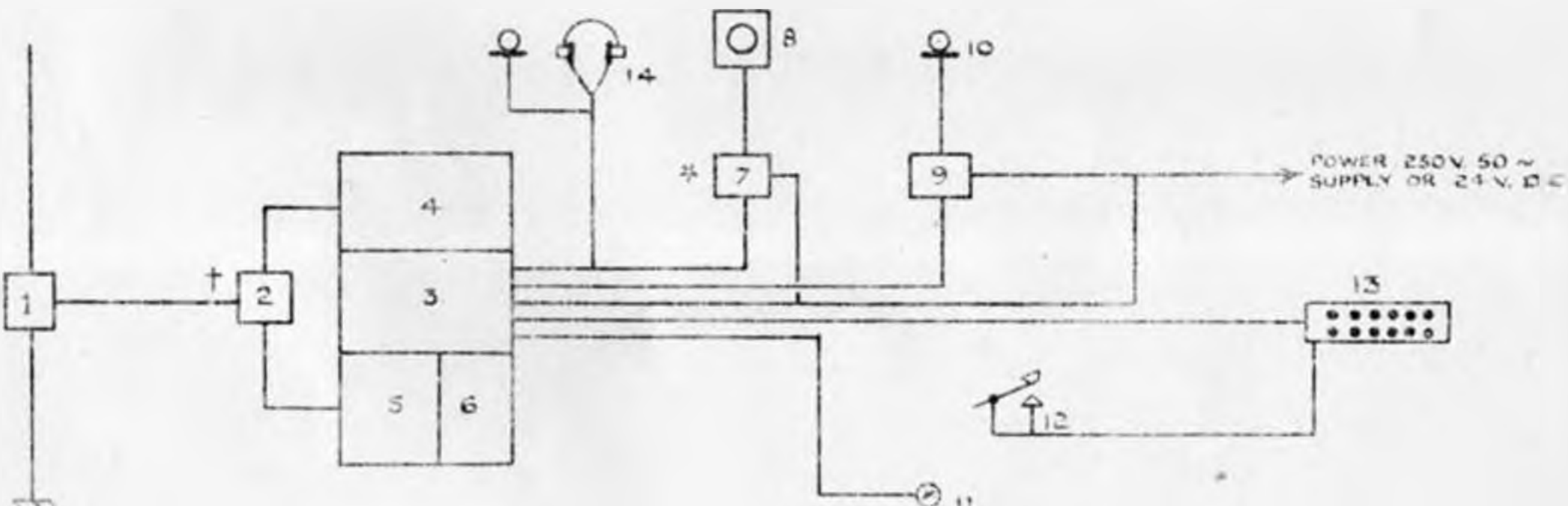
PROVISIONAL HANDBOOK

FOR

TYPE 613

1946

TYPE 613 BLOCK SCHEMATIC DIAGRAM



NO	ITEM	PART NO
1	AERIAL JUNCTION BOX	
2	AERIAL MATCHING UNIT	10A/1283
3	CHASSIS ASSEMBLY	
4	TRANSMITTER UNIT	58632
5	RECEIVER UNIT	
6	POWER UNIT TYPE 67	124 20 204 94
7	LOUD SPEAKER AMPLIFIER	57605

NO	ITEM	PART NO
8	LOUD SPEAKER D.F.S.	37723
9	MICROPHONE UNIT	57507
10	MICROPHONE	146213A
11	M.C.W. SWITCH	1229
12	MORSE KEY	7601
13	CONTROLLER ELECTRN	107122
14	MICROPHONE HEADSET	146703

* IF REQUIRED, NOT USED WITH TYPE 613 CS
 † ONLY WITH QUARTER WAVE VERTICAL AERIAL



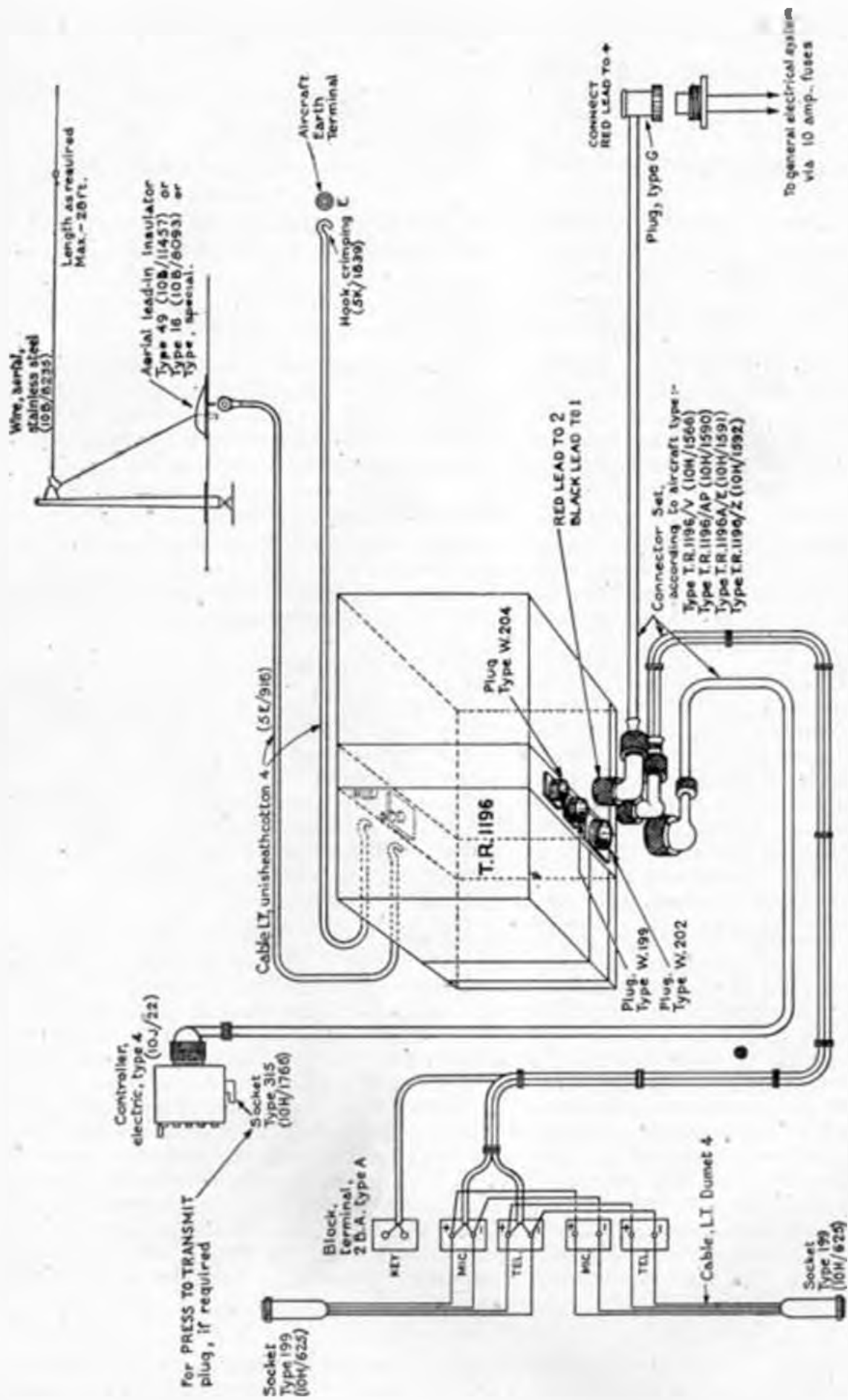
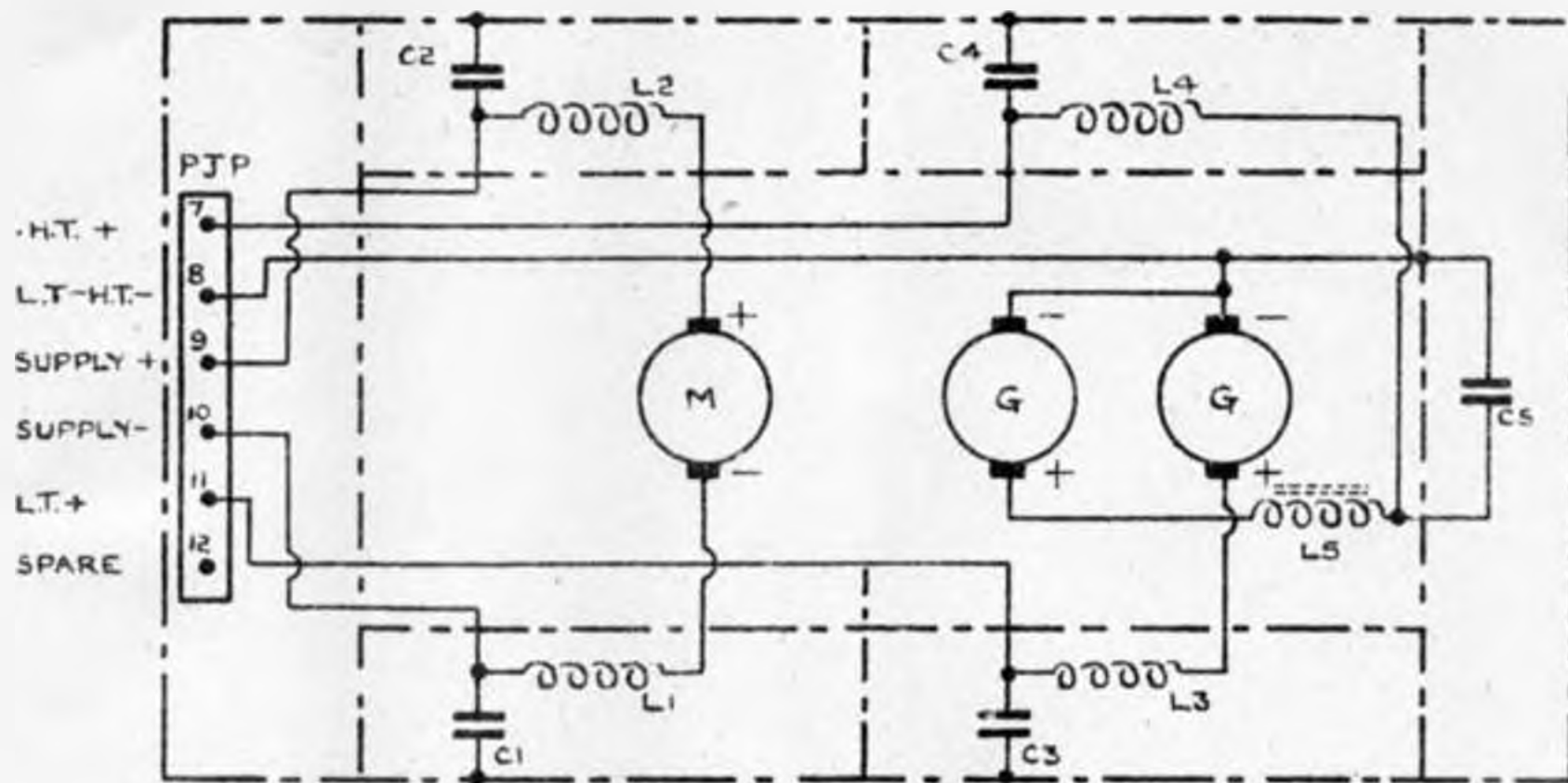
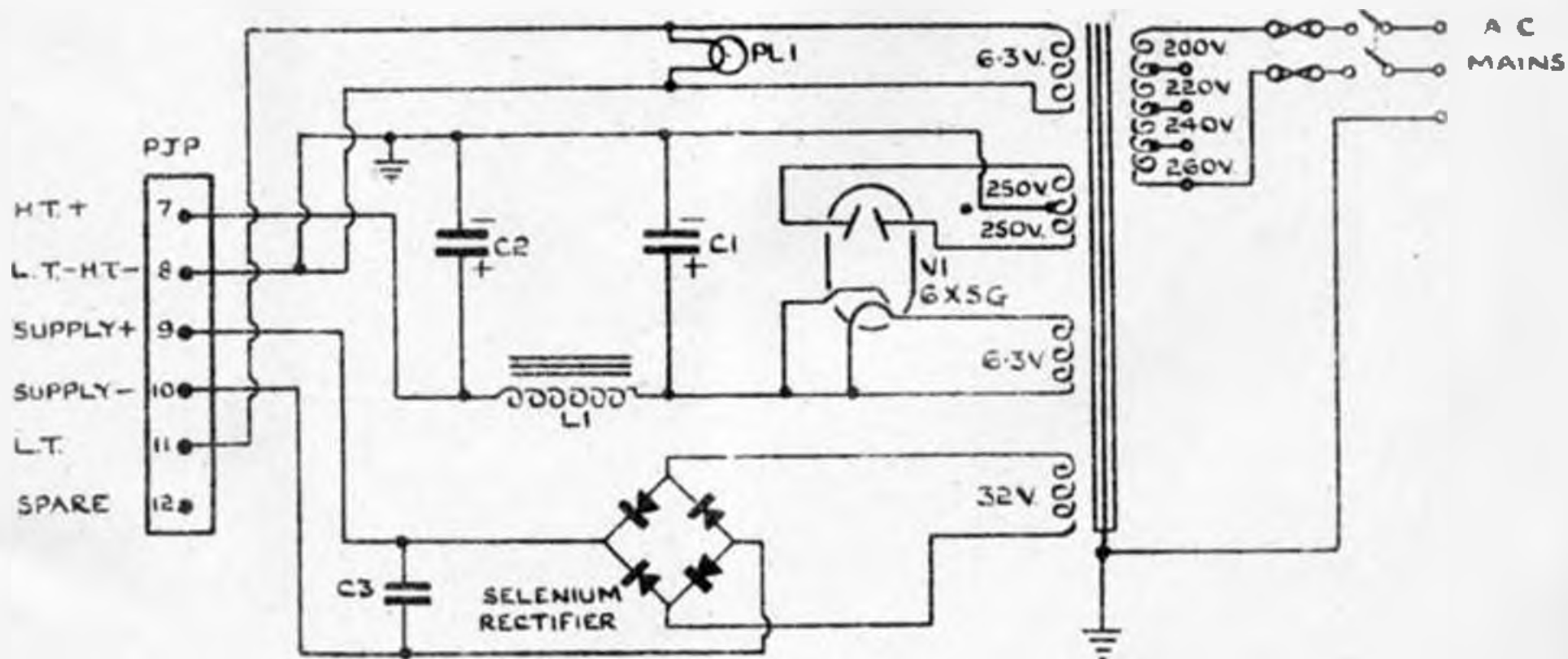


Fig. 21...Typical installation diagram.

TYPE 613 ES POWER UNIT (TYPE 87)



TYPE 613 FS POWER UNIT (TYPE 301)



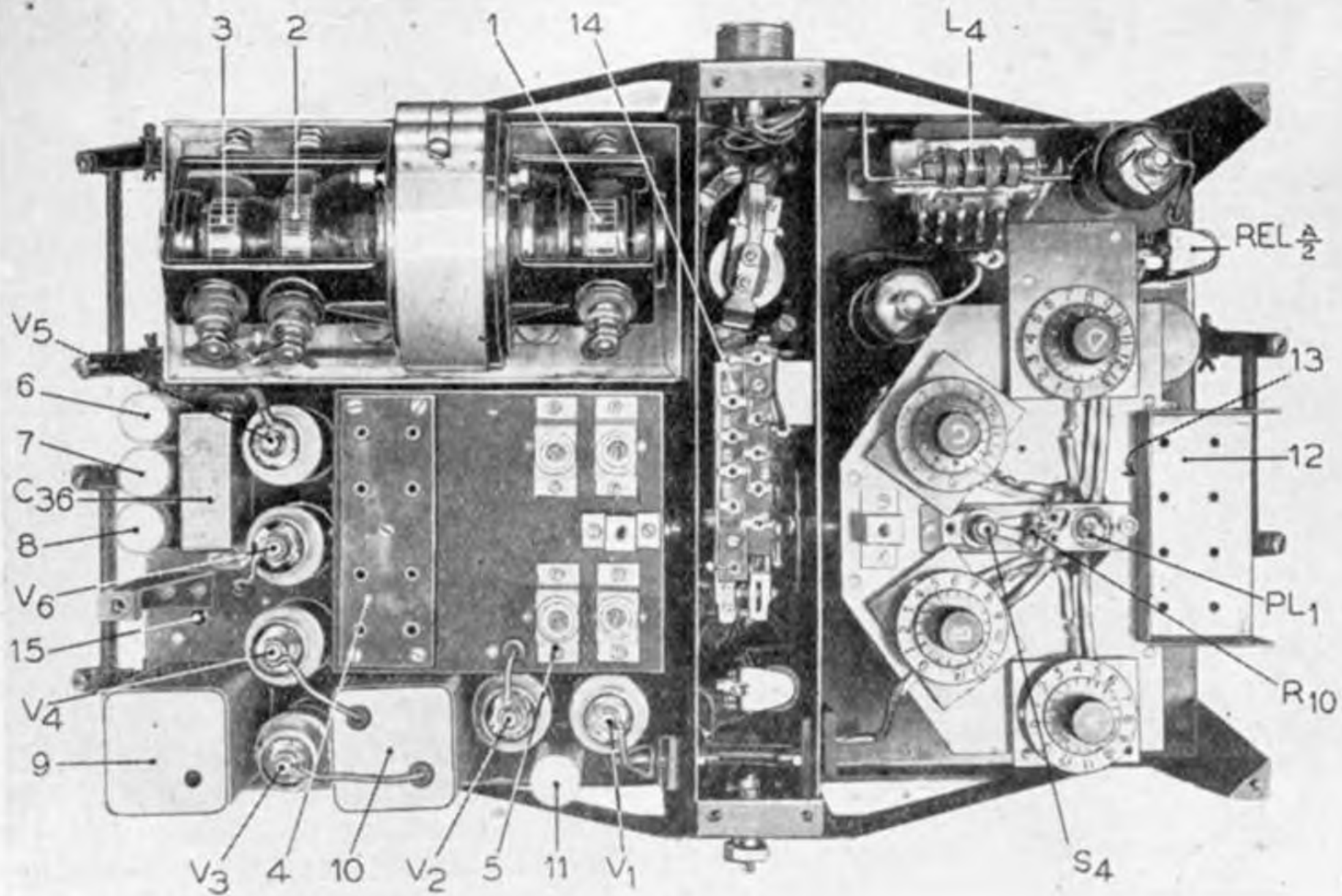


Fig. 8.—Plan view of T.R.1196 with covers removed.